

APPLICATION

*Light and heavy steel structure
Warehouse, factory, cold storage
Power plant, oil, refinery
Equipment Support and pipe rack
Metro/LRT/BRT systems, depot, airport terminal
Highrise building*



BANGLADESH STEEL ALLIANCE

A PRE ENGINEERED STEEL BUILDING MANUFACTURER COMPANY

 www.bsa.com.bd

 **Hotline +8801731217629**

 bsa.pebinfo@gmail.com



Welcome to BSA

BSA is able to offer complete services for pre-engineered buildings including consulting, design, fabrication and erection. This integrated production process will bring to our customer a huge advantages of an optimal solution, high-quality products, and perfect services. The professional project management system helps us increasing project efficiency and promptly support any customer's requirement.

The most outstanding feature about BSA comes from the optimal design solutions performed by highly experienced, and professional engineering team. With a skilled design team and the most advanced design software, BSA Provides the most optimal design to our customers.

BSA brings to customer satisfaction and complete peace of mind about the quality of design, in accordance with the most stringent technical requirements considering the weather and environmental conditions.

The advanced automatic production facilities and experienced employees help us offering the most competitive price to our customers.

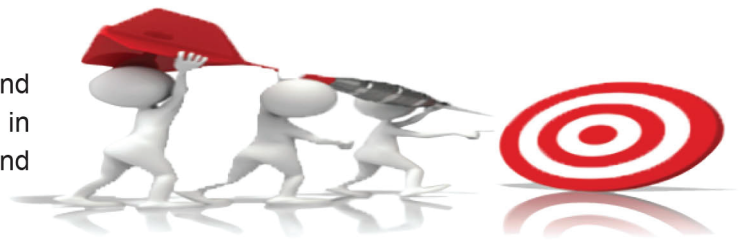
With a well-trained workforce, professional staffs, quality management system, high technology automatic production facilities, BSA delivers optimal solution, high-quality products and perfect services for your project.

Company Profile

Name of company	: Bangladesh Steel Alliance
Address: Corporate Office	: Natural Maymona Tower (1st Floor), Badaldi Main Road, Jashim Uddin, Uttara, Dhaka-1230
Telephone & Cell	: +8801532 504328, +8801710 382945
E-mail	: bsa.pebinfo@gmail.com
Website	: www.bsa.com.bd
Principal Bankers :	Standard Bank Ltd, Basic Bank Ltd, City Bank Ltd.
Factory Area	: Floor Area- 8,000 sft, Open Yard- 6,000 sft
Factory Address	: Tegoria, South Keraniganj, Dhaka
Production Capacity	: 10,000 MT/Year
Field of Activity	: Design, Detailing, Fabrication & Installation of Pre-Engineered Steel Buildings & Manufacturer of Color Coated Steel Sheet.

Vision

BSA wants to become a leading steel structure and pre-engineered steel building manufacturer in Bangladesh in terms of revenue, system quality and products and services.



Mission

BSA Provides Products and services that meet our customer's expectations to bring prosperity and sustainable development for Customers, Employees, Partners, Suppliers and Share holders.

Core Value

Company Members are committed to living and working according to the company's value, to build homogeneous and strong Company's culture, developing the foundation of each individual According to following core value:

Positive - Responsibility - Teamwork - Prestige - Integrity - Thinking – Discipline



What We Do

BSA is able to offer a complete Process of high-quality steel structure, including: Design, Fabrication, erection and after-sales services. This intergrated production process will bring to our customers huge advantages of an optimal solution, high-quality products and perfect customers services.



Design



Fabrication



Erection



Why BSA

Competitive Price



The advanced self-contained highly automatic design production line, along with experienced and professional staffs helps BSA to offer the most competitive price.

Quality Assurance



BSA produces all structural components of pre-engineered buildings, steel structure projects at a factory with quality control system. BSA has qualified Quality Control Department who guarantees all BSA products to meet international standards.

Fast Delivery



With modern manufacturing factories and a professionally and highly trained erection team who is strictly supervised by project management board, BSA is committed to manufacturing and providing products and services on schedule.

Perfect After-Sales Service



With the regular attendance of the Project management board to serve customer's from the beginning to the final stage of projects, customers can be sure of the quality, on-schedule progress and guaranteed service.

Best Design



Experienced and highly trained professional team of designers who have graduate and post-graduate degrees along with most advanced design software help BSA to bring out the best solution to our customers.

Stable and High Quality raw Material

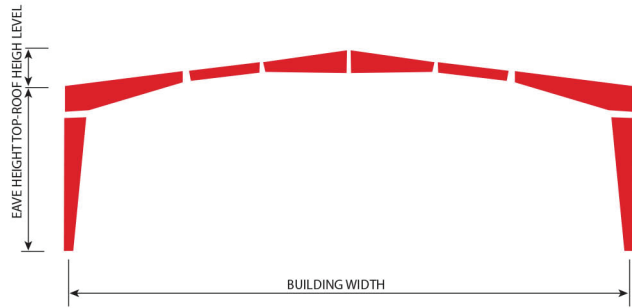


With careful selection of suppliers, BSA mainly uses materials from China, Japan, India that guarantees stable and high-quality products.

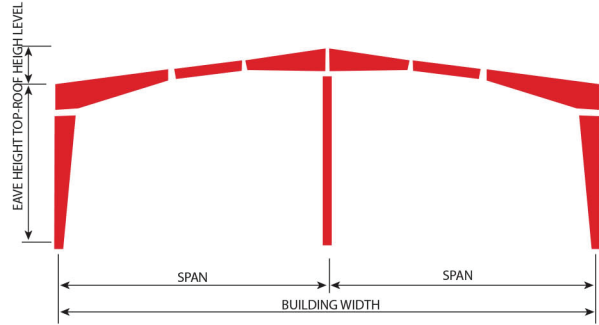


Standard Frame System

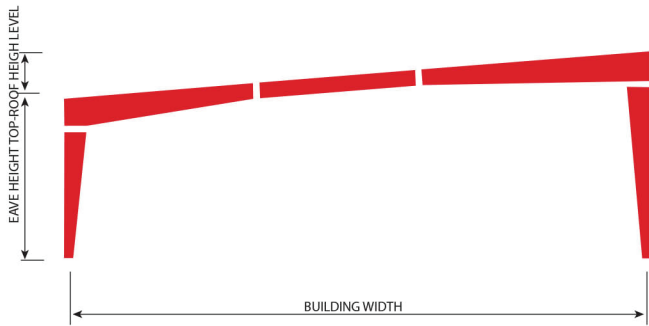
All of customer's requirements are analyzed reasonably by technical department



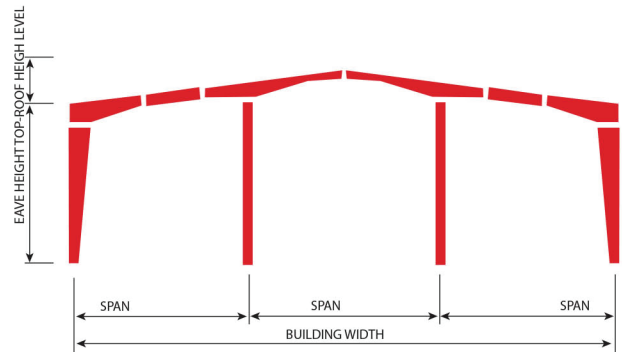
MAX PRACTICAL WIDTH W=100m
CS FRAME SAMPLE



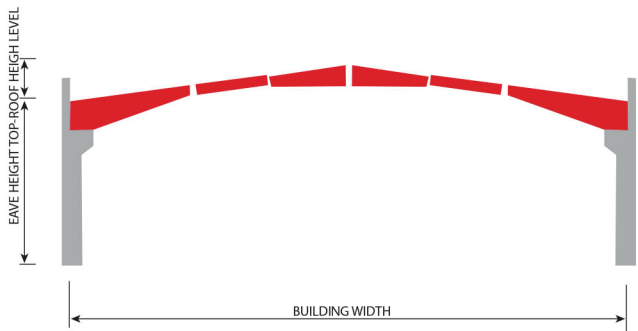
MAX PRACTICAL WIDTH W=150m
MS1 FRAME SAMPLE



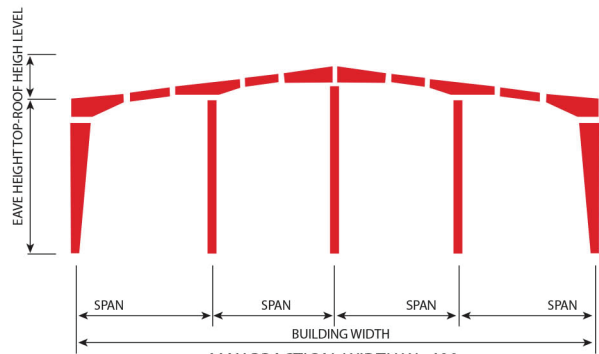
MAX PRACTICAL WIDTH W = 60m
SS FRAME SAMPLE



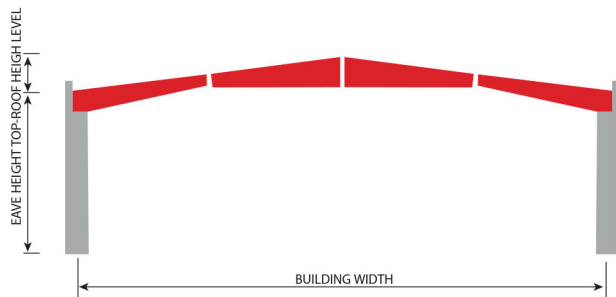
MAX PRACTICAL WIDTH W=200m
MS2 FRAME SAMPLE



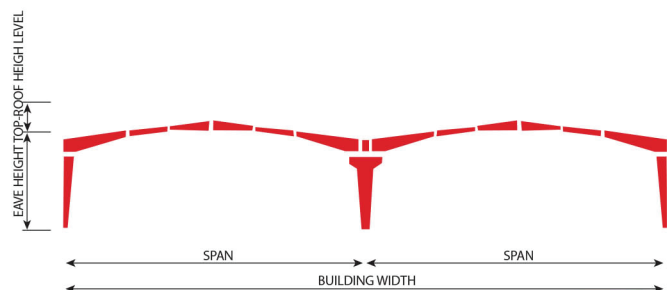
MAX PRACTICAL WIDTH W = 50m
RS1 FRAME SAMPLE



MAX PRACTICAL WIDTH W=400m
MS3 FRAME SAMPLE

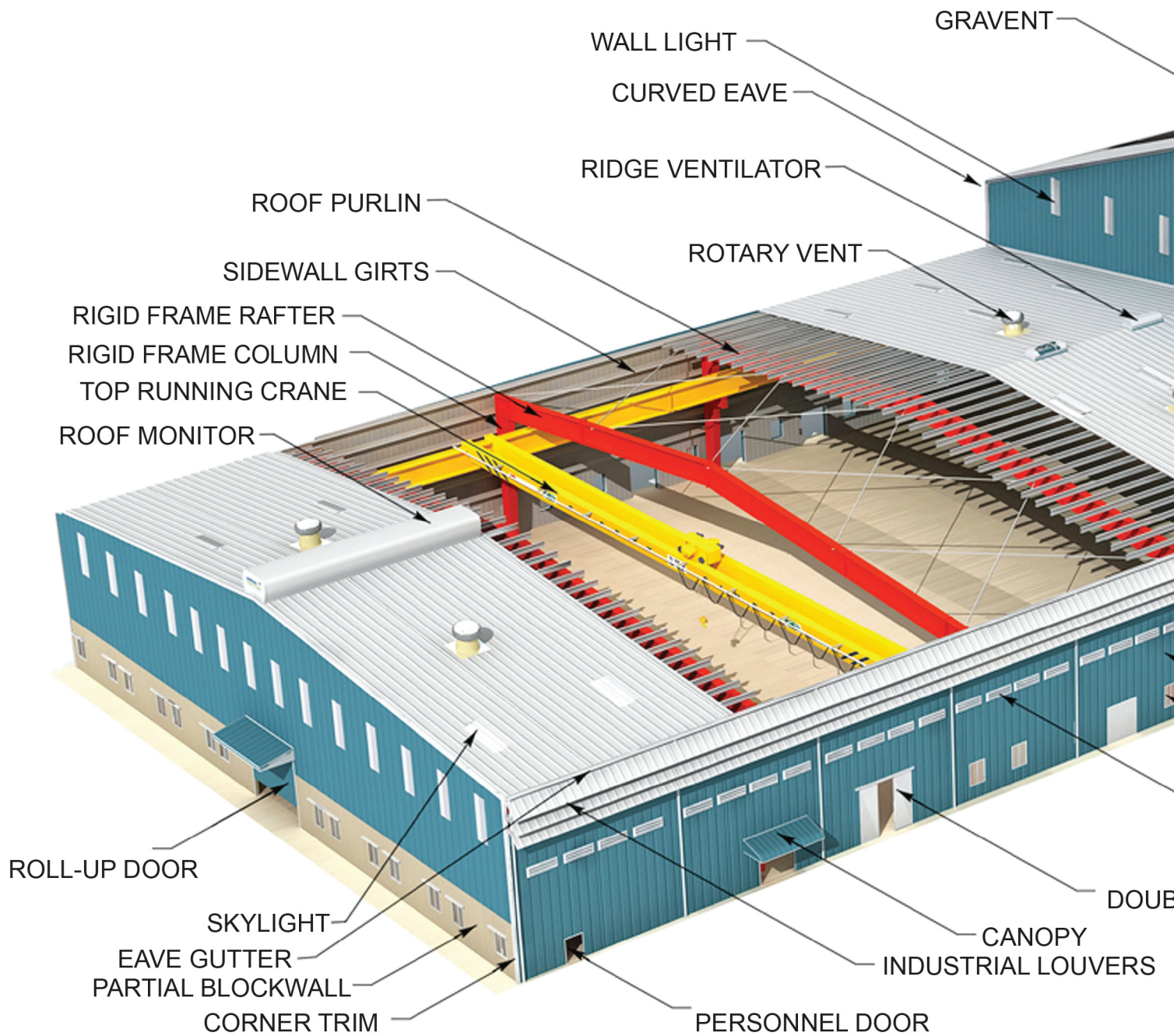


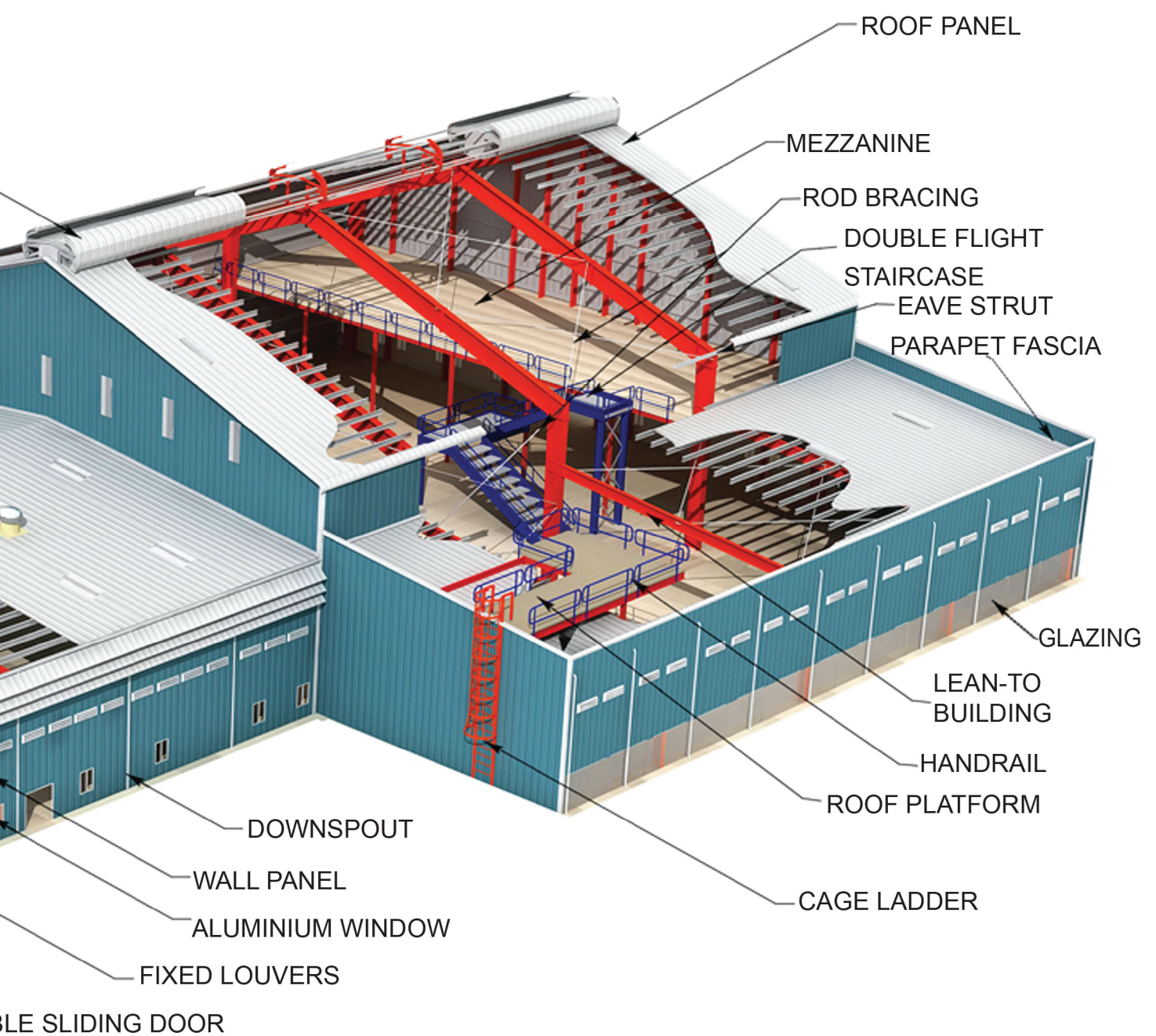
MAX PRACTICAL WIDTH W = 60m
RS2 FRAME SAMPLE

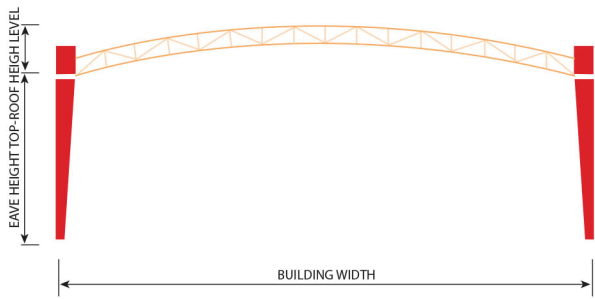


MAX PRACTICAL WIDTH W = 150m
MG1 FRAME SAMPLE

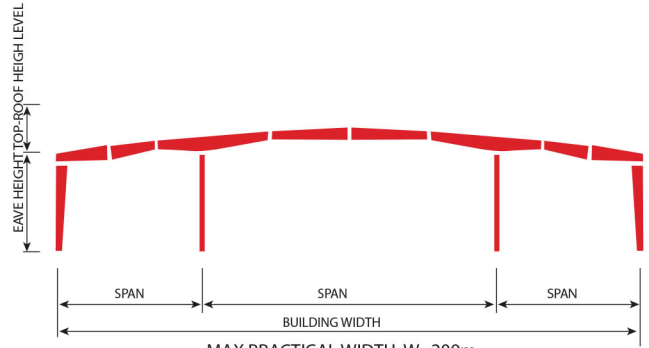
PRE ENGINEERED STEEL BUILDING SYSTEM





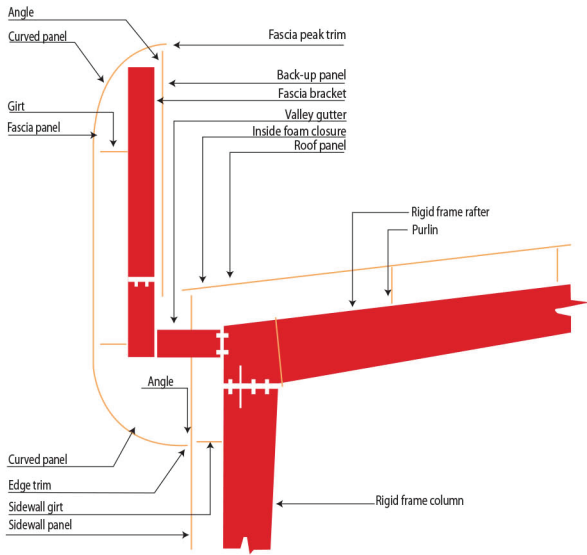


MAX PRACTICAL WIDTH W=100m
CS2 FRAME SAMPLE

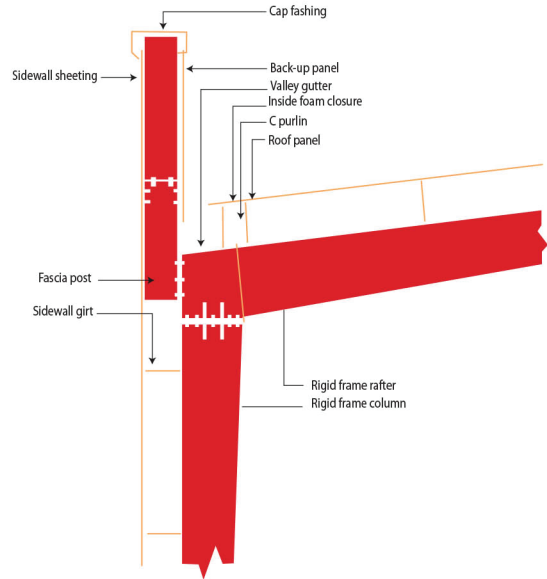


MAX PRACTICAL WIDTH W=200m
CS1 FRAME SAMPLE

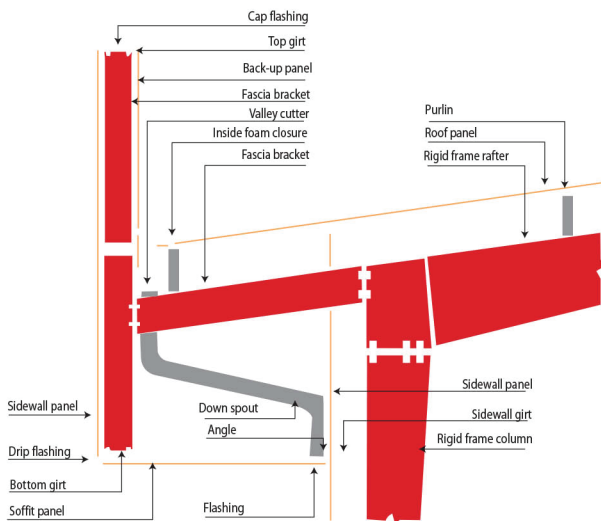
Other Miscellaneous Profile



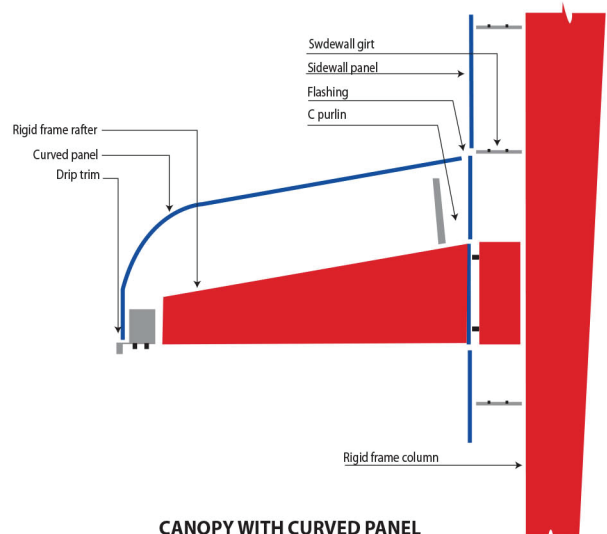
CURVED FASCIA



PARAPET FASCIA



FASCIA WITH SOFFIT AND VALLEY GUTTER

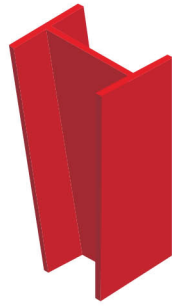


CANOPY WITH CURVED PANEL

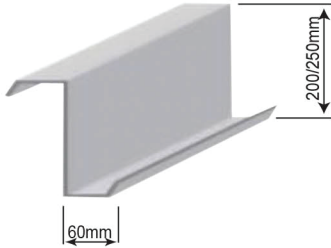
Structural Components



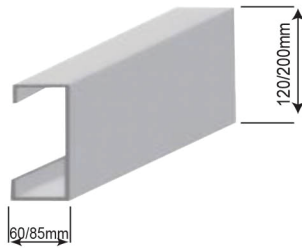
TYPICAL RAFTER



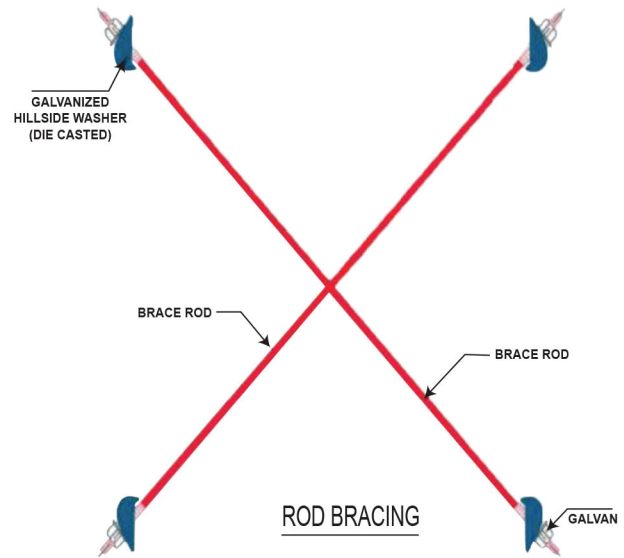
TYPICAL COLUMN



TYPICAL "Z" SECTION



TYPICAL "C" SECTION



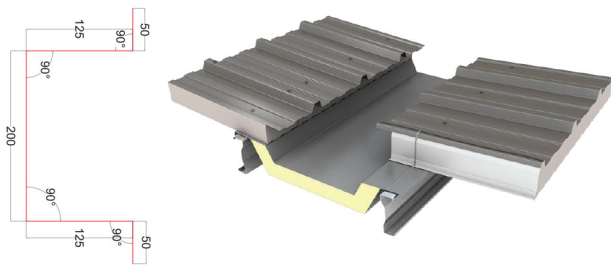
ROD BRACING

Material Specifications for Project

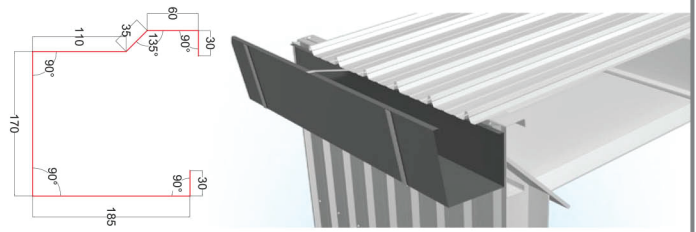
No	Components		Specifications	Minimum yield strength	Applicable Design Code
1	Built-up (Plates)		ASTM A572 - Gr50 (or equivalent) <20mm	$F_y = 34.5 \text{ kN/cm}^2$	AISC - American Institute of Steel Construction - Latest Edition
2	Hot Rolled	Angles	ASTM A-36 (or equivalent)	$F_y = 34.5 \text{ kN/cm}^2$	AISC - American Institute of Steel Construction - Latest Edition
		Beams	ASTM A-36 (or equivalent)	$F_y = 34.5 \text{ kN/cm}^2$	AISC - American Institute of Steel Construction - Latest Edition
3	Cold Form (Z275)	Galvanized (Z275)	ASTM A-653 (M) SS GR 50 (or equivalent)	$F_y = 34.5 \text{ kN/cm}^2$	AISC - American Iron & Steel Institute - 2001 Edition
4	Roof panel		AZ150 Zinc Aluminum Base ASTM A792 Gr. 50	$F_y = 34.5 \text{ kN/cm}^2$	AISC - American Iron & Steel Institute - 2001 Edition
5	x-Bracing	Galvanized Cable bracing	DIN 3066 (or equivalent)	$F_y = 157 \text{ kN/cm}^2$	AISC - American of Civil Engineers Standards
6	Anchor bolts (Galvanized)		ASTM A36 (or equivalent)	$F_y = 40.0 \text{ kN/cm}^2$	AISC - American Institute of Steel Construction - Latest Edition
7	High strength Bolts (Galvanized)		ASTM A325 Type 1 (or equivalent)	$F_t = 30.3 \text{ kN/cm}^2$ $F_u = 72 \text{ to } 83 \text{ kN/cm}^2$	AISC - American Institute of Steel Construction - Latest Edition
8	Machine Bolts (Galvanized)		ASTM - A 307 (or equivalent)	$F_t = 13.8 \text{ kN/cm}^2$ $F_u = 71.0 \text{ kN/cm}^2$	AISC - American Institute of Steel Construction - Latest Edition

Trims and Flashing System

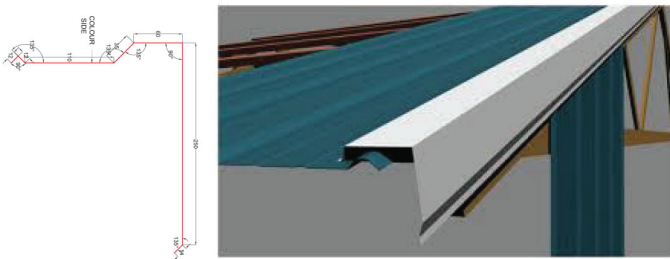
Valley Gutter



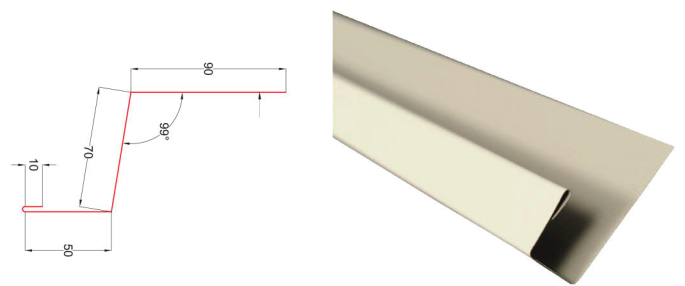
Eave Gutter



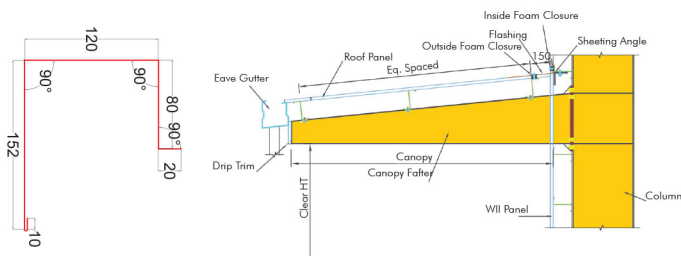
Gable Trim



Drip Trim



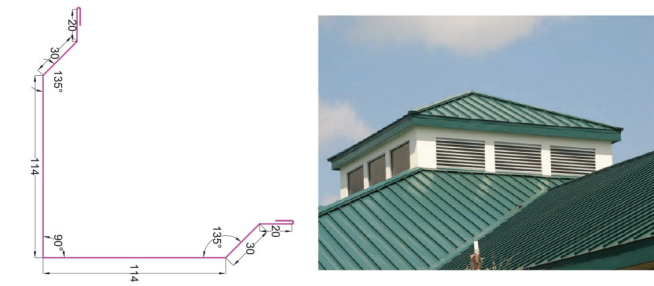
Canopy Trim



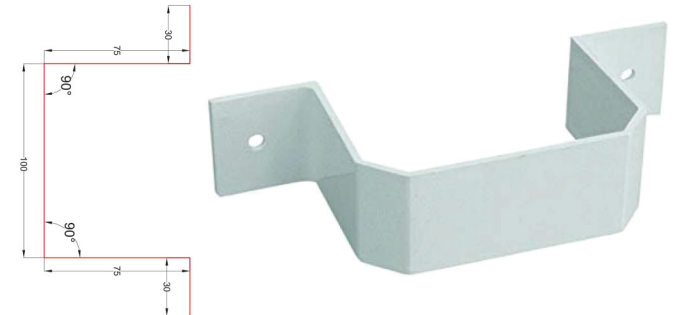
Ridge Cap



Corner Cap

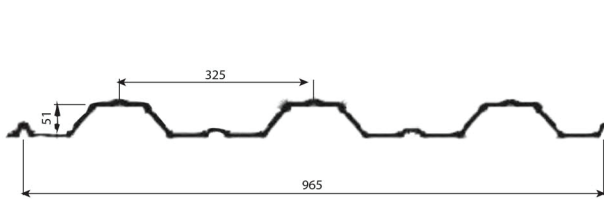


Down Spout Clamp

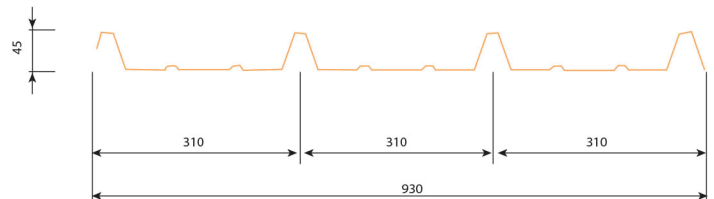
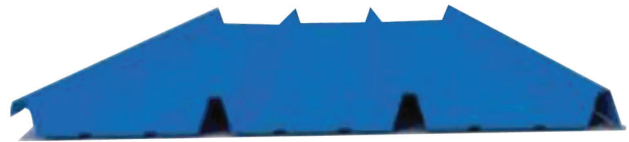


Steel Panel Profile

Deck Panel



Roof Panel



Turnbuckle & Cable Shackle



High Strength Torque Control Bolts



Connection Bolts



Anchor Bolt



Air Bubble



Glasswool

Primer



Light Grey



Red

Finished Paint



Light Grey



Dark Grey



Blue




Green


Color in this brochure be different from the practical color.




PROJECT PICTURE



 Natural Maymona Tower (1st Floor), Badaldi Main Road, Jashim Uddin, Uttara, Dhaka-1230

 +880 1532 504328
+8801710 382945

 bsa.pebinfo@gmail.com

 Tegoria, South Keraniganj, Dhaka

 www.bsa.com.bd